

Interior Solar Protection

# The perfect match *naturally*

**Transparency**

**3 OPENNESS FACTORS**

for optimum comfort

**Weaving**

**NATURAL**

woven look

**Design**

**OVER 100 VARIATIONS**

for imagining everything

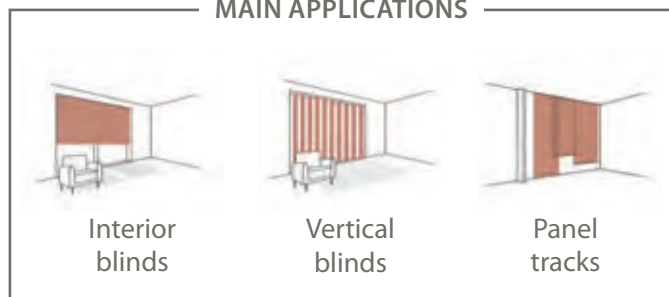
Soltis  
**Touch**  
*Naturally*

**Filter  
the light  
with perfect  
clarity.**

**5% 3% 1%**

Soltis Touch is available in 3 openness factors to adapt to every need and configuration.

MAIN APPLICATIONS



**OPTIMUM  
COMFORT**

**Give your interiors  
a touch of natural elegance.**

Soltis Touch combines aesthetic qualities with high levels of thermal, acoustic and light protection performance.



**5%**

Transparency maintained to take full advantage of the exterior view and natural light.

## A touch of singularity ousting uniformity and neutrality.

A uniquely natural effect created by an exclusive weave combining different materials and colours.

Soltis Touch plays with light, creating chromatic effects and interplay of transparencies designed to give character to your interiors.

Solar protection becomes an essential part of your interior design.



**3%**

The ideal combination of aesthetics, thermal, visual and acoustic comfort.



## A UNIQUE WEAVE FOR A 100% NATURAL LOOK

**1%**

The ideal solution for controlling glare and enhancing acoustic comfort.



# SUPERIOR PERFORMANCES FOR RELAXING INTERIORS



## Thermal performance

Soltis Touch excludes up to 91% of incoming heat to maintain a stable interior temperature in summer without increasing air conditioning requirements. This enhances user comfort and building energy performance.



## Visual comfort

Soltis Touch maintains outward views and uninterrupted natural light while protecting from glare.



## Acoustic performance

Soltis Touch reduces reverberation, thereby improving the occupants' acoustic comfort. The fabric absorbs up to 45% of the noise within a 100 mm air gap.



## Fire safety

Soltis Touch meets international standards for fire rating standards and does not contribute to flashover.



## Health safety

Soltis Touch fabric is guaranteed totally phthalate-free. It is certified Greenguard Gold, proving the fabric complies with the most stringent indoor air quality standards. It therefore contributes to creating a healthier interior.

7651-50948

7653-50948

7655-50948



# OVER 100 VARIATIONS AVAILABLE TO EMBODY YOUR INTERIOR DESIGN

**Jasmine**  
7653-50982



**Carrara**  
7653-50937



**Mother of Pearl**  
7653-50953



**Flint**  
7653-50946



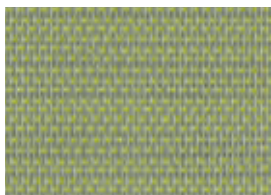
**Agate grey**  
7653-50945



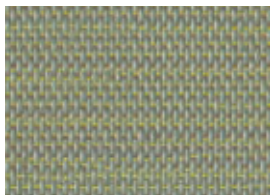
**Wheat**  
7653-50941



**Citrine**  
7653-50962



**Turmeric**  
7653-50942



**Biscuit**  
7653-50960



**Maple**  
7653-50952



**Rope**  
7653-50957



**Celestial**  
7653-50938



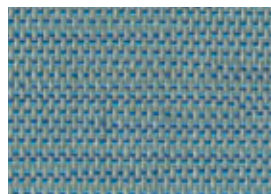
**Elephant**  
7653-50943



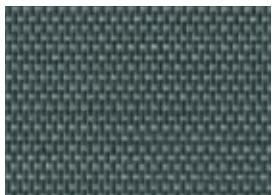
**Opaline**  
7653-50947



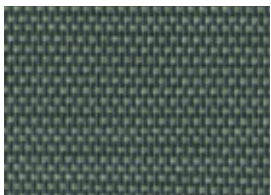
**Shore**  
7653-50949



**Coffee bean**  
7653-50939



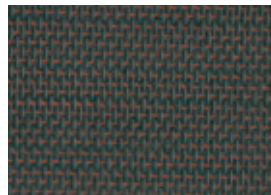
**Tannin**  
7653-50948



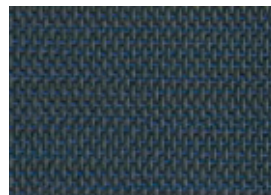
**Mocha**  
7653-50958



**Mahogany**  
7653-50951



**Tornado**  
7653-50963



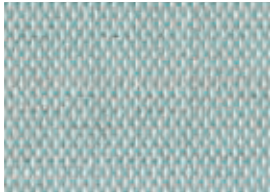
# SOLAR AND LIGHT

(according to EN 14501)

## SOLTIS TOUCH 5% (7655)

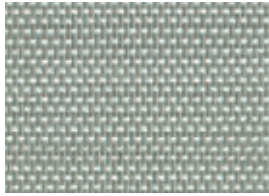
Colours and references	Roll widths		TS	RS	AS	TV n-h	g <sub>int</sub> <sup>1</sup> EN 13363-2 <sup>1</sup> Glazing C <sup>1</sup>	g <sub>int</sub> <sup>1</sup> EN 13363-2 <sup>1</sup> Glazing D <sup>1</sup>
	180 cm	270 cm						
<b>Carrara</b> 50937	•	•	11	54	35	9	0.32	0.15
<b>Celestial</b> 50938	•	•	7	28	65	7	0.43	0.23
<b>Coffee bean</b> 50939	•	•	7	14	79	7	0.49	0.27
<b>Charcoal</b> 50940	•	•	6	9	85	6	0.51	0.28
<b>Wheat</b> 50941	•	•	10	48	42	8	0.35	0.18
<b>Turmeric</b> 50942	•	•	9	31	60	8	0.42	0.23
<b>Elephant</b> 50943	•	•	7	23	70	7	0.45	0.24
<b>Cobalt</b> 50944	•	•	6	11	83	6	0.51	0.28
<b>Agate grey</b> 50945	•	•	9	45	46	8	0.36	0.18
<b>Flint</b> 50946	•	•	9	46	45	8	0.35	0.18
<b>Opaline</b> 50947		•	9	32	59	8	0.42	0.23
<b>Tannin</b> 50948	•	•	7	15	78	7	0.49	0.27
<b>Shore</b> 50949		•	8	31	61	7	0.43	0.23
<b>Twilight</b> 50950								
<b>Mahogany</b> 50951		•	8	11	81	7	0.50	0.28
<b>Maple</b> 50952								
<b>Mother of Pearl</b> 50953								
<b>Flower bud</b> 50954								
<b>Glacier</b> 50955		•	9	47	44	8	0.35	0.18
<b>Rope</b> 50957	•	•	9	34	57	8	0.41	0.21
<b>Mocha</b> 50958	•	•	7	15	78	7	0.50	0.28
<b>Raffia</b> 50959	•	•	9	39	52	8	0.38	0.20
<b>Biscuit</b> 50960	•	•	8	26	66	7	0.44	0.24
<b>Pacific</b> 50961								
<b>Citrine</b> 50962								
<b>Tornado</b> 50963		•	6	10	84	6	0.51	0.28
<b>Reed</b> 50964								
<b>Jasmine</b> 50982	•	•	17	74	9	15	0.22	0.10

**Glacier**  
7653-50955



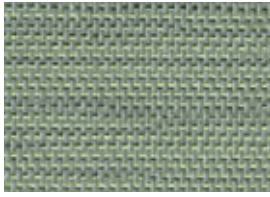
5% 3%

**Raffia**  
7653-50959



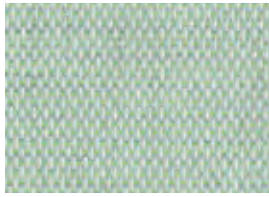
5% 3% 1%

**Reed**  
7653-50964



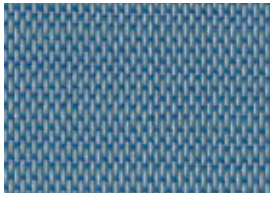
3%

**Flower bud**  
7653-50954



3%

**Pacific**  
7653-50961



3%

**Twilight**  
7653-50950



3%

**Cobalt**  
7653-50944



5% 3%

**Charcoal**  
7653-50940



5% 3% 1%



TS : Solar Transmission (%)

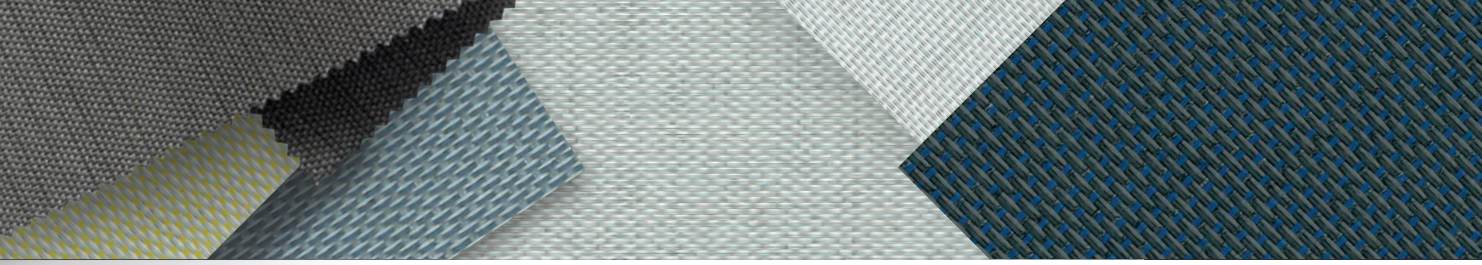
RS : Solar Reflection (%)

AS : Solar Absorption (%)

TS + RS + AS = 100% of incident energy

TV n-h : Normal-hemispherical visible light transmission (%)

g<sub>int</sub><sup>1</sup> : Internal solar factor



# PERFORMANCES



**SOLTIS TOUCH 3% (7653)**

Roll widths			TS	RS	AS	TV n-h	g <sub>gl</sub> <sup>*</sup> EN 13363-2 <sup>*</sup> Glazing C <sup>**</sup>	g <sub>gl</sub> <sup>*</sup> EN 13363-2 <sup>*</sup> Glazing D <sup>***</sup>
127 mm	180 cm	270 cm						
.	.	.	8	55	37	7	0.31	0.15
.	.	.	4	28	68	4	0.43	0.23
.	.	.	4	14	82	4	0.49	0.27
.	.	.	4	9	87	4	0.51	0.28
.	.	.	7	48	45	4	0.35	0.18
.	.	.	5	31	64	4	0.42	0.23
.	.	.	3	23	74	3	0.45	0.24
.	.	.	4	11	85	4	0.51	0.28
.	.	.	6	46	48	5	0.35	0.18
.	.	.	7	45	48	6	0.35	0.18
.	.	.	6	33	61	5	0.41	0.22
.	.	.	5	15	80	5	0.49	0.27
.	.	.	5	32	63	4	0.42	0.23
.	.	.	4	11	85	4	0.51	0.28
.	.	.	4	11	85	3	0.51	0.28
.	.	.	5	25	70	4	0.45	0.24
.	.	.	7	52	41	6	0.32	0.16
.	.	.	7	44	49	6	0.32	0.18
.	.	.	6	47	47	5	0.35	0.18
.	.	.	6	35	59	5	0.40	0.21
.	.	.	4	12	84	4	0.50	0.28
.	.	.	6	40	54	6	0.38	0.20
.	.	.	5	26	69	4	0.45	0.24
.	.	.	5	26	69	4	0.45	0.24
.	.	.	5	32	63	4	0.42	0.23
.	.	.	4	11	85	4	0.51	0.28
.	.	.	5	30	65	5	0.42	0.23
.	.	.	14	75	11	12	0.22	0.10

**SOLTIS TOUCH 1% (7651)**

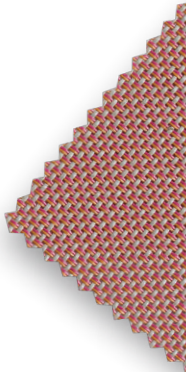
Roll widths		TS	RS	AS	TV n-h	g <sub>gl</sub> <sup>*</sup> EN 13363-2 <sup>*</sup> Glazing C <sup>**</sup>	g <sub>gl</sub> <sup>*</sup> EN 13363-2 <sup>*</sup> Glazing D <sup>***</sup>
180 cm	270 cm						
.	.	6	57	37	4	0.30	0.15
.	.	2	8	90	2	0.49	0.26
.	.	4	47	49	3	0.35	0.18
.	.	2	16	82	2	0.49	0.27
.	.	4	42	54	3	0.37	0.19
.	.	11	76	13	9	0.21	0.09

\* Detailed method EN 13363-2

The transmission and reflection values above are based on the spectral values of the glass combined with the screen. These are used to calculate the the g<sub>gl</sub> value.

\*\*Type "C" glazing is an insulating double glazing with low-e coating in position 3 (4 mm + 16 mm space + 4 mm float ; Argon-filled) g = 0.59 – U = 1.2.

\*\*\*Type "D" glazing is solar control double glazing with a low-e coating in position 2 (4 mm + 16 mm space + 4 mm float ; Argon-filled) g = 0.32 – U = 1.1.



# Soltis Touch

Naturally

	■ Soltis Touch 5% (7655)	■ Soltis Touch 3% (7653 & BV7653)	■ Soltis Touch 1% (7651)	■ Standards
Openness factor	5%	3%	1%	
Weight	430 g/m <sup>2</sup> - 12.7 oz	470 g/m <sup>2</sup> - 13.9 oz	450 g/m <sup>2</sup> - 13.3 oz	EN ISO 2286-2
Thickness	0,73 mm - 730 microns	0,75 mm - 750 microns	0,65 mm - 650 microns	-
Roll widths	180 cm - 270 cm 70.9 in. - 106.3 in.	180 cm - 270 cm - 127 mm 70.9 in. - 106.3 in. - 5 in.	180 cm - 270 cm 70.9 in. - 106.3 in.	-
Standard width format	45 lm in 180 cm width 30 lm in 270 cm width	45 lm in 180 cm width 45 lm in 127mm width 30 lm in 270 cm width	45 lm in 180 cm width 30 lm in 270 cm width	-
Breaking strength (warp/weft)	150 / 100 daN / 5 cm	150 / 120 daN / 5 cm	150 / 100 daN / 5 cm	EN ISO 1421
Tear strength (warp/weft)	15 / 15 daN	15 / 15 daN	15 / 15 daN	DIN 53.363
Acoustic absorption	-	$\alpha_w=0.40$ (LA=100mm)	$\alpha_w=0.45$ (LA=100mm)	EN ISO 354

Flame retardancy

**M1** / NFP 92-507 — **M1** / UNE23727-90 — **B1** / DIN 4102-1 — **1530.2 and 1530.3** / S/ NZS — **Class A** / ASTM E84 — **Classe 1** / EN 13773 — **Classe 1** / UNI 9177 — **VKF 5.3** SN 198898 — BS 7837 — BS 5867-2 Type B — **Method 1 & 2** / NFPA 701 — CSFMT19 — **Schwerbrennbar Q1-Tr1** / ONORM A3800 — CAN ULC S109

Euroclasse

**B-s2,d0** / EN 13501-1      **B-s2,d0** / EN 13501-1      **B-s2,d0** / EN 13 501-1

## ■ Management systems

Quality

ISO 9001

## ■ Certifications, labels



## ■ Tools and service

- Personalised service for simulating your project's thermal performance and related Soltis solar protection systems: please contact Serge Ferrari representative
- Document and photo libraries : [www.sergeferrari.com](http://www.sergeferrari.com)

The technical characteristics quoted are average values subject to a +/- 10% tolerance. Purchasers of our products are responsible for their application and their transformation with regard to possible third party rights. Purchasers of our products are also responsible for their implementation and installation in accordance with the standards, codes of practice and safety regulations of the destination country. Consult our warranty document for information regarding the contractual guarantee. The characteristic values provided in this document reflect test results obtained in accordance with design practices. They are quoted for information only to offer our customers an optimum product usage. Our products are subject to changes reflecting technical progress and we reserve the right to modify their characteristics at any time. The purchaser of our products is responsible for checking to verify the validity of the above-quoted values.

**Serge Ferrari**



[sergeferrari.com](http://sergeferrari.com)

